

Boat Rack (MBR) Assembly Guide

(May 2008)

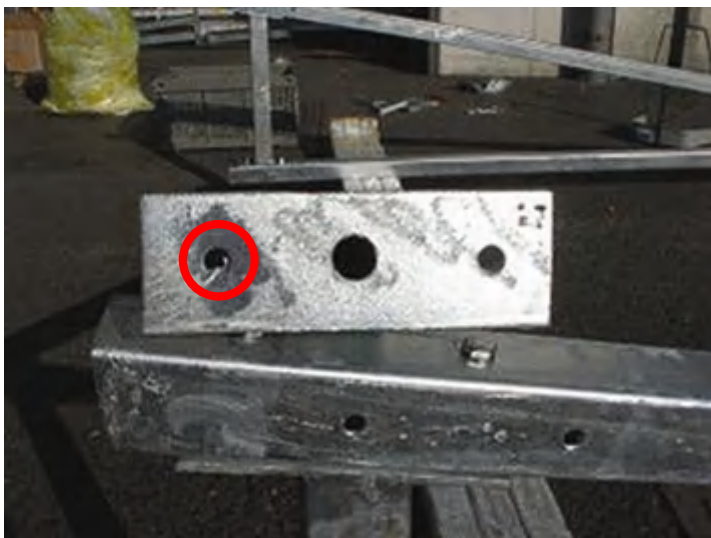
Tips:

- There should always be 1 washer between the head of the bolt and the rack, and 1 washer between the nut and the rack.
- Find a clean and flat place to assemble the rack.

All of the different parts should be labeled. There are different packs of boats to use with different parts. Please see the order form for details.

1. Lay each upright flat on the ground, and attach the bases.
2. **For single sided racks**, the diagonal part of the upright should be towards the outside edge of the base. **For double sided racks**, the diagonal part of the 2 uprights should be facing each other, towards the center of the base, and the connector needs to be attached at the top of the uprights.
3. When all of the uprights have been attached to the bases, stand one of these upright/base pieces up, and then attach 2 cross stays to the bases (towards the outside edges of the bases). When these are attached, do the same with the other upright/base piece/s.
4. Next attach the remaining cross stay/s (1 for single sided racks, 2 for double sided racks) to the uprights at the best height for you, based on the height that you will attach the arms. If this cross stay position is not good, it will obstruct the riggers of the boat/s on the top arms.
5. Next, push the rack over on to its side, and attach all of the wheels to the bases. Then push the rack back to the upright position.
6. Lastly, attach the arms at the heights that are most suitable for you.

Trouble shooting



During galvanising, the holes may have become partly blocked.



Please use a 9mm drill (or 8.5mm) to unblock the hole.